



Cobbold Road, W12

£4,500 Per Month

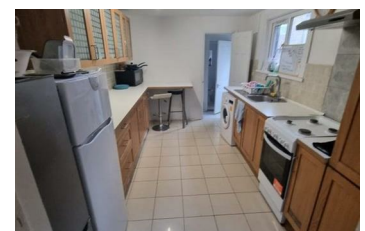
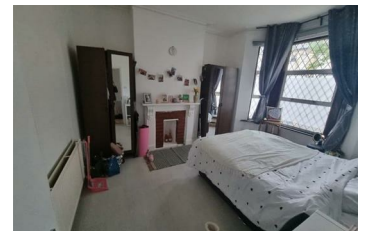
A spacious and fully furnished five double bedroom home in the heart of Askew Village, combining modern design with attractive period features including exposed brick walls. Please note that the current photographs do not reflect the latest refurbishment and updated images will be available soon.

Ideally located within walking distance of Askew Village, Wendell Park and local green spaces, the property also offers excellent access to Stamford Brook Underground Station and Westfield Shopping Centre.

Recently refurbished throughout, the property benefits from brand new beds and mattresses and comes fully furnished. The accommodation comprises three double bedrooms on the first floor and two double bedrooms on the ground floor.

There is a family bathroom and separate WC upstairs, along with a downstairs wet room and additional WC. The property also features a large, spacious kitchen and a private rear garden.

The property holds a current HMO licence and is suitable for families, students and professional house sharers. Bills are not included.



Energy Efficiency Rating		Environmental Impact (CO ₂) Rating	
Current	Potential	Current	Potential
A	A	A	A
B	B	B	B
C	C	C	C
D	D	D	D
E	E	E	E
F	F	F	F
G	G	G	G

England & Wales 2008/1/EC